



SVGRS Newsletter February 2024

2024 Calendar of Events

Jan-31	Executive Board Meeting (new year planning schedule)
Feb 9	First Quarter Newsletter
Mar 20	General Meeting - New Oxford Train Station 7:00pm
Mar 30	Midwest Region Large Scale Train Show (West Chester, Ohio) 10:00 am – 4:00pm
Mar-31	Deadline to pay 2024 Dues
Apr 12	ECLSTS Train Show Day 1 (No club display) Annapolis. MD (9:00 – 5:00)
Apr 13	ECLSTS Train Show Day 2 (No club display) Annapolis. MD (9:00 – 5:00)
Apr 18	Eastern Division TCA Show York, PA (Members Only Day)
Apr 19	Eastern Division TCA Show York, PA Open to public (9:00am - 6:30pm)
Apr 20	Eastern Division TCA Show York, PA Open to public (9:00am - 3:00pm)
Apr 27	NELSTS Train Show Day 1 (No club display) West Springfield, MA
Apr 28	NELSTS Train Show Day 2 (No club display) West Springfield, MA
May 13	Second Quarter Newsletter

June 9	Equipment Clean Up - National Apple Museum (2:00 pm)
TBD	Open House (Kevin Adams) – date to be determined
Sept 29	General Meeting /Club Picnic, (1:00 pm) Southampton Township Park, Southampton Junction Pavilion-, 200 Airport Road, Shippensburg, PA
Sep 29	Equipment Clean Up - National Apple Museum (2:00 pm) This is a back-up date if June 9 does not happen
Oct 14	Third Quarter Newsletter
Nov 4	Rocky Ridge Pre-Setup, Track & Platforms (10:00 am)
Nov 16	Rocky Ridge Complete Setup (10:00 am)
Nov 29	Christmas Magic Opening Day (5:00 pm)
Dec 1	General Meeting /Christmas Party - National Apple Museum (4:30 pm)
Dec 30	Rocky Ridge Christmas Magic Ends
Jan 11	Rocky Ridge Tear Down (10:00 am)

Please print or cut out and put on your refrigerator for reference

Attention all Members

For those who were not at the Christmas Party, left early or maybe did not quite believe what you thought you heard, Turk is stepping down as President of the club for personal reasons. Currently he is not completely quitting, but he is stepping way back. There is no question he has been a driving force for the club for a lot of years. This means we need to elect a new President and we need to have some serious thought and discussion about what and how we manage future events. Now is the time to come forward with all ideas be they small or large on what you think we can or should change about the club structure, focus and or shows.

Please be thinking of who you would like to nominate for club leadership and please plan to make every effort to attend the March 20th club meeting as I think we need to vote as a membership at that time. Nominations and or thoughts and ideas can be passed to any of us on the board. Call or email, it does not matter, but we need to hear from you ASAP!

Your Remaining Board: Bob Kluk, Jeff Shubert, Dee Simmons, and Rob Segessenman



President's Message

Well, it's time to express my appreciation for the friendships and fun I have had over the past 27 years with the SVGRS club. A lot of times it was work over fun. Thanks to my buddy Jeff Shubert for finding out that a G scale train club even existed in 1997 and getting us to join.

I will be stepping down as President at the March meeting. I have always tried to lead and move us into the future. It was great to be a leader, along with others to build some fantastic displays and work on trains along the way. Declining membership and age, as well as interests have changed in our society. Not to mention, it's damn expensive now that a lot of our beloved manufacturers have gone out of business.

At this time, it's difficult at this stage for me to be so committed to keep our small group going. I spoke at the Christmas party about being dedicated to keeping the club moving forward through my parents having cancer and passing away as well as taking care of my ex-wife Renee through 2 cancers as well as other surgeries. Plus, I had a daughter in cheerleading and Band. I still wonder how the heck I did all that back then! I was not working 50 hrs. a week that's for sure.

Now I have been blessed with my new wife Keann. However, she has been battling CIDP disease and for the past year and we have had to work together on this to keep her mobile. From Feb 2023 to July, Keann received 26 IVIG treatments at various hospitals. When she became paralyzed from above the waist down, she was rushed to Hershey medical center. They immediately installed an Apheresis Catheter, and she started blood plasma exchanges to try and stop her body from shutting down. Since the end of July; she has been making 2 trips a week to Hershey medical center for over 50 Blood Plasma exchanges! She only took a few weeks off of work and continues to push forward working 40+ hrs. a week. My mom was right; I should have given up the Honda business and started a caregiver business. Lots of nurses in this family! Who knew I would be given so many tasks in life. As Most of you know, my Honda work has become more demanding than ever keeping me at 45-50hrs a week. In addition, Barry McNew and I work on repairs and sound every Tuesday night and sometimes twice a week. It's hard to believe at age 60 I have to work longer and harder. With that being said, I need to take some time for my wife and enjoy some time off and focus on more important issues and let others step up and help the club. It's been a privilege to guide the club to financial freedom and play with trains.

See ya on the next track, Turk

WHO KNEW LARGE SCALE RAILROADING WOULD BE SO HARD!



2023 Annual Christmas Party

Our annual Christmas party was held at the National Apple Museum in Biglerville PA on Sunday December 3rd, 2023. Although Bob Wenger has officially stepped down as VP and moved away to State College, he played a key role in this year's logistics right up and through setup in helping Turk get everything ready.

Turk Russell and Penny Segessenman hosted our event once again keeping everyone entertained and informed. We had 32 family/members in attendance. Keann Russell gave the blessing before we all dug into dinner which was provided by Uncle Eddies BBQ. Penny provided yet another new selection of jokes and Keann sold our 50/50 tickets.

Tim Crider's family, working under the "Uncle Eddies BBQ" name are the folks that we used many years ago for Summer Pig roasts. The meal consisted of Roast Turkey, stuffing, mashed potatoes, corn, and salad. As always, we had a train cake for dessert featuring a photo of East Broad Tops newly restored Loco #16. Everybody went home full!

This year we added a new feature with a train "photo booth," consisting of a steam loco backdrop at the station. Several folks took advantage and Turk snapped all the pics and made sure everyone received a copy.

A short business meeting followed, and all officers gave reports with much discussion surrounding the 2023 Christmas Magic display at Rocky Ridge. We announced the 2024 East Coast Large Scale Train Show is once again being held more as a swap-meet adjacent to Star Hobbies in Annapolis MD April 12th and 13th. The club will not be creating a layout as this is just too far away and the show size does not justify it. This will also be the second year for the Northeast Large-Scale show held in Massachusetts at the "Big-E" facilities April 27th and 28th. This show is hosted by the same folks that do the huge all-scale train show in January.

The event then proceeded to the giveaway prizes phase. Marilyn Bowers was the 50/50 winner of \$41.00. We also gave away over a dozen prizes.

The evening wrapped up with a slide show presentation by Turk and Rob.

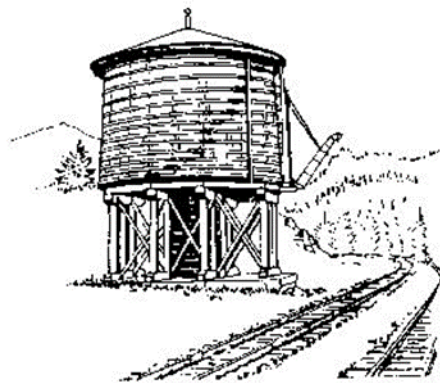
Turk gave a brief history of five recently restored steam engines in Eastern Seaboard. R&N 2102, WMSRR 1309, EBT 16, US Sugar 148 and Cass Climax 9.

Thanks to all that attended!

Submitted by Rob & Turk







2023 Rocky Ridge Christmas Magic round up

Submitted by: Rob Segessenman Jr.

Each year seems to bring new experiences and new records with Christmas Magic at Rocky Ridge. This year was no exception although every record is not always a solid plus. This was our third year back since COVID and we saw a more “normal” level of attendance. I want to specifically thank my wife Penny and co-coordinator Turk Russell along with his wife Keann for making this show viable. Their support and involvement were a huge part of our path to success. Speaking of success, this year’s show netted about \$50 dollars more than last year. The 2023 Rocky Ridge season started with the trailer repack held at the National Apple Museum where the club now stores the trailer and additional items. This was held on Sunday October 23rd from 3:00-4:30pm. We had thirteen folks present with Turk and Penny taking the lead on sorting and repacking much of the Rocky Ridge display items.

This year’s Rocky Ridge Pre-setup was held Tuesday November 6th from 10:00am till 2:30pm. We had six workers attending and we succeeded in getting the platforms set and fastened together, closing in and insulating the barn door, hanging the mural, and setting the track loop for Thomas and the main Christmas Tree. This time we also put down, shimmed, and secured all the track loops, inside and out!

The main setup day fell on Saturday November 11th, and the weather was mild. This was the first time we did not use our own heater. The Park had their heat turned on for us. That was a huge change and benefit to everyone, making it quite comfortable even with both doors open some of the time. Bob and Janet Kluk and Mary Jane Reiff provided refreshments. That was greatly appreciated by all! Although we had a slightly smaller than expected crew of 13 volunteers, we completed the bulk of the setup between 10am and 5pm.

As in 2023 the Park Service, recognizing we are a huge part of the draw, stepped up and made the full payment in advance which was increased by \$400.00 this year. This bigger increase was justified to cover some of the unique changes we made to the display. Rob and Penny custom built a mini diorama of Christmas magic in the park that was all lit up. We installed that in place of the main farm area so it could be better viewed. The 2023 calendar afforded us 35 run days between Thanksgiving and New Year’s Eve, but as mentioned we had six days of closure due to weather leaving us only 29 days to build on the base payment with donations and raffle. A full financial report will be made at the March meeting.

Surprisingly, with 29 days open, overall attendance was up 5,000 guests in 2023 with a total of 46,647 attending according to the park service. This was the second highest attendance year! Supposedly, their best is still at 52k.

As we have done for a few years now, seven trains ran on the layout, which along with the scaled down amusement park, provided a lot motion. Unfortunately, we could never get the small roller coaster to work, and we did struggle to get the bulk of the rides to run reliably at first. Everyone is getting older, and it is tough to tinker with trains and rides in a confined area. Turk coached Kirk Slenker and Bob Hyatt on a regular basis on how to make the necessary repairs and fixes that kept the layout running. A Thanks to them!!

Kudos to Turk for pressing everyone to set the schedule of volunteers in 2023, in the end we had a nice mix of newer members working with our experienced operators. The custom Lionel Consolidation and the USA-Trains GP38/GP-9 started the show, but we then subbed in the F3 A/B set and our Bachmann C-19 in SVGRS livery. Turk and Barry performed heavy maintenance on the LGB Moguls and the Lionel Consolidation during the show, and all the engines will be serviced through the winter and this spring.

Tear down saw another mild day for the 17 helpers on January 13th insuring we got cleaned up and packed up in record time. The “found” coins on “clean-up day” were a nice bonus of \$135.97, along with another \$48.97 from the pond.

Raffle Roundup: This year raffle chances down for a total of raffle 1,009 tickets sold, but an increase in donations offset that. I must give a shout out to Turk for once again convincing Bachmann to send us this a train set for free meaning that was all profit! This year’s winner was Victoria Myers of Airville Pa. I hope all our monitors got to see and enjoy the happy faces! Keann and Penny set this year’s raffle ticket record selling 100 tickets on Dec 16th. On the same night, Turk and Rob had the highest recorded donation night at \$140.00. The Russells and Segessenmans had the overall combined night record of \$240.00! We were lucky but were glad it benefits all!

Final Note: Thanks to everyone who helped make this a success for this club. It is our life-blood and while we added a few new features for the Christmas Magic 40th anniversary, I think we have a tried-and-true formula for success. We have all those leaders before me to thank for that! I just carried on what has been proven to be great! Still, it does not mean there is no room for change, so please let me know your thoughts!

Thanks, from myself and Turk for another successful event!







The World's Largest Outdoor Train Garden

Submitted by: Turk and Barry

Barry and Linda McNew recently took a trip to Hawaii, followed by a flight back to San Diego, California to visit their oldest son, Sean. Sean took them on lots of train adventures, but we wanted everyone to see the world's largest outdoor Train Garden in Pomona CA. It's almost the size of a football field with many groups working different areas with a variety of scenes. These photos give you a taste of what it's like there. Barry says it's pretty Awesome.

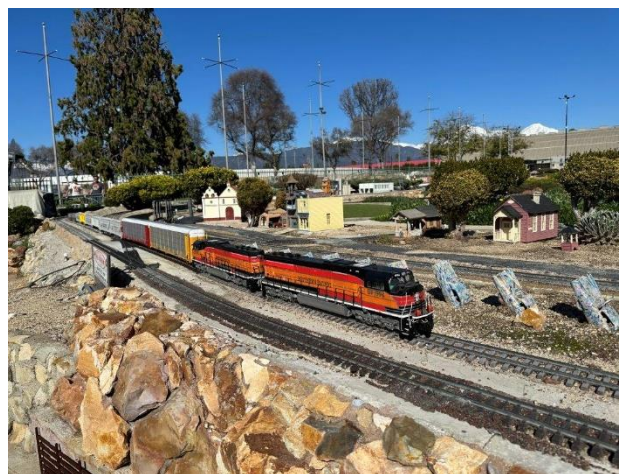
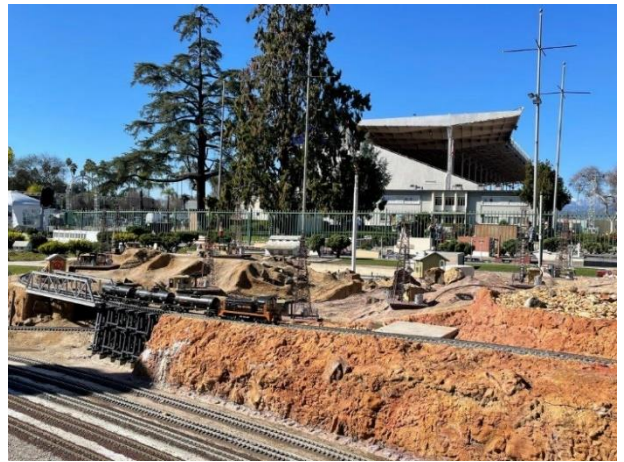
The Fairplex Garden Railroad
Welcome to our exhibit!



Fun Facts:
Created: 1924
Moved to this location: 1935
Garden Railroad Volunteers started: 1997
Size: 100' x 275' (about the size of a football field)
Feet of track: 10,000
Miles of wire used: 8
Gallons of water in the ponds: about 25,000

This is an exhibit of the Creative Department and is staffed by Volunteers from The Learning Center at Fairplex.





Large Scale Industry News

Submitted by Turk Russell

Family Fun with LGB

This construction starter set, complete with a circle of track, locomotive controller, and transformer, is ready for your family to set up and run straight out of the Christmas wrapping. Include the Construction Site Add-On set and your family can "play" together repairing or expanding your railroad. Märklin/LGB trains are fun for the whole family.

More information at:

LGB.com or email customerservice@marklin.com



70503 Construction Site Train Starter Set



Bachmann Brings Back, and Improves, the Closed Streetcar

The Bachmann Closed Streetcar is returning, now equipped with metal gears for smooth and long-lasting operation. Streetcars of this type served North American cities from the late 1800s to the 1920s (and in some cases later). The Closed Streetcar features an operating directional headlight on each end, a fully furnished and lighted interior with seats and hanging straps for standing passengers, poseable doors, and a non-functional, but positionable, metal trolley pole. Available in blue & cream for United Traction Company and red & green for the North Pole Rapid Transit.

More information at: shop.bachmanntrains.com



93944 United Traction Company #1833
Closed Streetcar

LGB trains brings back Genesis Locomotives

The trains can be purchased separately and new cars are now available. Amtrak fans can now have a complete set. Check out LGBtrains.com for more info

LGB® Garden Railroading

Get on board and join the fun!



The locomotives have an mfx/DCC decoder with many digitally controlled light and sound functions, including cab and instrument lighting. The locomotives come with American knuckle couplers installed and LGB system couplers included.



20494 Amtrak AMD 103 "Genesis" Diesel Locomotive; Road No. 108
Paint scheme and lettering are prototypical for Era VI. This is a special version of road number 108 for the 50th anniversary of Amtrak.

20493 Amtrak AMD 103 "Genesis" Diesel Locomotive; Road No. 160
Paint scheme and lettering are an adaptation of the Phase III scheme as applied to Amtrak's Dash 8-32BWH locomotives to celebrate the 50th anniversary of Amtrak.



LGB Amtrak cars have interior lighting and metal wheelsets. Passenger cars also have interior details. Cars include stickers for creating different road numbers when adding additional passenger cars to create a prototypical Amtrak passenger train.

31201 Amtrak Baggage Car (Streamliner)

31202 Amfleet® Passenger Car - Business Class

31203 Amfleet® Passenger Car - Coach Class

PIKO America Adds more Steam Locomotive Choices 2

For Union Pacific fans, locomotive #103 is a saddle tank 2-6-0T with lights, smoke, and analog sound to circle your Christmas tree or serve as a switcher running on your railroad.

Aitchison Topeka & Santa Fe modelers may like the Santa Fe Mini-Mogul #718 available now to go with their all-black AT&SF Mini-Mogul #728 from 2022. Mini-Mogul #247 and Rio Grande Saddle tank #55 are available for Denver & Rio Grande Western fans.

More information at: www.piko-america.com

SplitJaw Products Upgrades their Auto Shuttle/Reversing Unit and Adds an Outdoor Enclosure Option

Split Jaw Products has improved their Auto Shuttle/Reversing controller, adding an easier way to adjust the stop-pause time. An optional kit adds an intermediate stop (minimum 10 feet between stops). The 5 amp controller is an accelerating/decelerating back-and-forth reversing unit with complete hands-off operation and the capacity to run lights, sound and smoke on your train without overloading. The unit senses the ends of the track and self-adjusts to provide a very realistic slowdown and then creep to a stop. Track ends are sensed using a pair of Split Jaw insulating rail clamps, plus easy to install diodes (all included). An optional weather-resistant enclosure for the controller is available for outdoor use.



For more information, go to:
www.railclamp.com

Train Shows 2024

submitted by Turk Russell

1. Greater Cincinnati Garden Railway Society presents the 2024 Midwest Region Large Scale Train Show at EnterTRAINment Junction on March 30, 2024, in West Chester Township, Ohio. Info at: www.largescaleshows.com
2. East Coast Large Scale Train Show will take place on April 12 & 13 at Bay 50 Shopping Center, 1564 Whitehall Rd, Annapolis, MD 21409 Info at: www.eclsts.com
3. The Northeast Large Scale Train Show returns to Eastern States Exposition fairgrounds in West Springfield, Massachusetts, on April 27 & 28, 2024. Info at: www.nelsts.org
4. Bay Area GRS modular tracks will be running at the Rail Fair at Ardenwood Historic Farm in Fremont, California, on Memorial Day Weekend, May 25, 26 & 27, 2024. Info at: www.spcrr.org
5. MO-KAN Garden Railroaders hosts a Midwest Garden Railroad Gathering over the weekend of May 30 to June 2, 2024. Layouts around Kansas City, workshops, vendors, and more. For info: www.mokangardenrailroaders.org
6. Riverside Railroaders Club sponsors the Northeast Ohio Large Scale (G Only) Train Show June 1, 2024, at the Warren OH SCOPE (YWCA). Info at: riversiderr.org
7. Finger Lakes Live Steamers welcome G Gauge railroaders to a Garden Railway Picnic, Open Run and Trunk Sale on June 9, 2024, 10am to 4pm in Marengo, New York. Info at: finger-lakeslivesteamers.org
8. San Diego Garden Railway Society will host the 2024 West Coast Regional Meet Saturday through Thursday, August 10 to 15, 2024. Look for details soon at: www.sdgardenrailway.com
9. Georgia Garden Railway Society is planning a three-day 2024 Southeast Regional \ Get-Together from August 23 to 25, 2024 including the 65th Atlanta Model train Show in Duluth, Georgia. For more information, check: www.ggrs.info

Joe Mower's 2014 Winter Project

Submitted by Joe Mower

I had a couple metal roofing caps that had been in my basement for several years, so I decided to put them to use. The longer one was left over from my cousin when he put up a metal shed; the second shorter piece was leftover when my daughter put on a metal roof on her home.

I decided to use the shorter piece to make a Farmers Market, the top opens to store my power pack. I am using a Dewalt 20-volt battery to power an RCS Train Controller that supplies track power to my layout. Amazon sells a battery holder for the Dewalt battery; it has a two-wire output that supplies power for running trains. I inserted a fuse to protect the RCS unit.

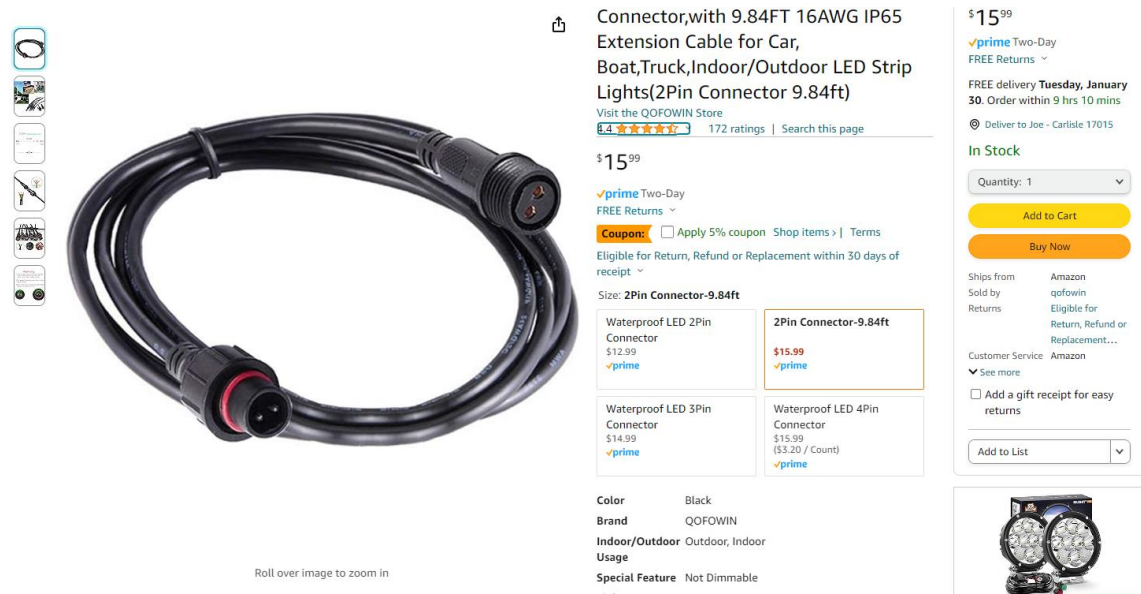


The inside toolbox can be disconnected and brought inside to protect the controller during severe weather.

The longer piece of flashing worked to build a warehouse I thought would be appropriate for Carlisle as we have a lot of warehouses. The top is hinged to allow storing a small train. This saves a lot of trips to the tool shed.



Other Accessories useful items I found on Amazon



Connector,with 9.84FT 16AWG IP65 Extension Cable for Car, Boat,Truck,Indoor/Outdoor LED Strip Lights(2Pin Connector 9.84ft)

Visit the QOFOWIN Store
6.4 ★★★★★ 172 ratings | Search this page

\$15.99

✓prime Two-Day
FREE Returns

Coupon: ☐ Apply 5% coupon Shop items > | Terms

Eligible for Return, Refund or Replacement within 30 days of receipt

Size: 2Pin Connector-9.84ft

Waterproof LED 2Pin Connector \$12.99 ✓prime	2Pin Connector-9.84ft \$15.99 ✓prime
Waterproof LED 3Pin Connector \$14.99 ✓prime	Waterproof LED 4Pin Connector \$15.99 (\$3.20 / Count) ✓prime

Color: Black
Brand: QOFOWIN
Indoor/Outdoor: Outdoor, Indoor
Usage:
Special Feature: Not Dimmable

Roll over image to zoom in

Quantity: 1

Add to Cart

Buy Now

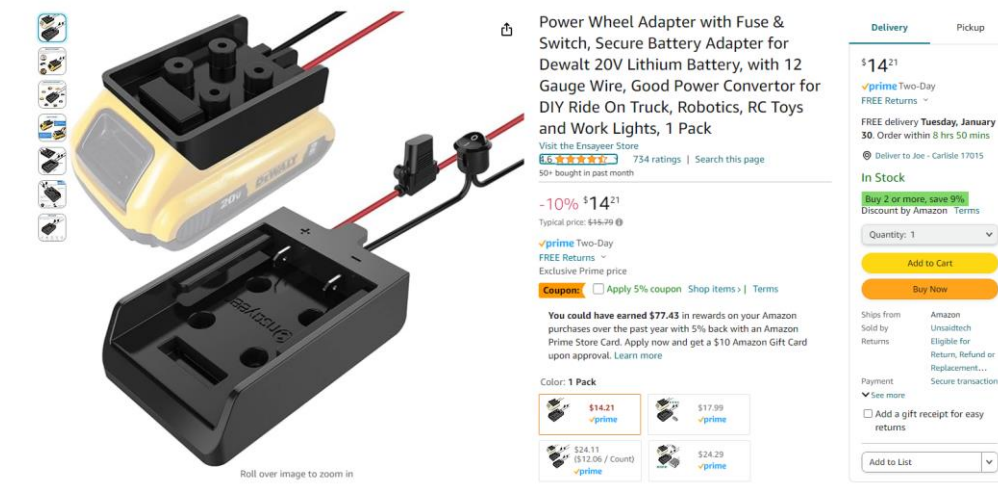
Ships from Amazon
Sold by qofowin
Returns: Eligible for Return, Refund or Replacement...

Customer Service: Amazon
See more

☐ Add a gift receipt for easy returns

Add to List

Amazon has a 16 Gauge wire quick connector for connecting your power supply



Power Wheel Adapter with Fuse & Switch, Secure Battery Adapter for Dewalt 20V Lithium Battery, with 12 Gauge Wire, Good Power Converter for DIY Ride On Truck, Robotics, RC Toys and Work Lights, 1 Pack

Visit the Ensayeeer Store
6.6 ★★★★★ 734 ratings | Search this page
50+ bought in past month

-10% \$14.21
Typical price: \$44.29 @

✓prime Two-Day
FREE Returns
Exclusive Prime price

Coupon: ☐ Apply 5% coupon Shop items > | Terms

You could have earned \$77.43 in rewards on your Amazon purchases over the past year with 5% back with an Amazon Prime Store Card. Apply now and get a \$10 Amazon Gift Card upon approval. Learn more

Color: 1 Pack

1 Pack \$14.21 ✓prime	2 Pack \$17.99 ✓prime
4 Pack \$24.11 (\$12.06 / Count) ✓prime	8 Pack \$24.29 ✓prime

Roll over image to zoom in

Delivery Pickup

\$14.21

✓prime Two-Day
FREE Returns

FREE delivery Tuesday, January 30. Order within 8 hrs 50 mins

Deliver to Joe - Carlisle 17015

In Stock

Buy 2 or more, save 9%
Discount by Amazon Terms

Quantity: 1

Add to Cart

Buy Now

Ships from Amazon
Sold by Unaidtech
Returns: Eligible for Return, Refund or Replacement...

Payment: Secure transaction
See more

☐ Add a gift receipt for easy returns

Add to List

Amazon has a connector to adapt a 20-volt Dewalt battery that I am using for power to the RCS controller.

Reminder

SVGRS DUES: Dues are \$25.00 per year. Your membership funds support the costs of insurance, website, picnics, and storage for our equipment. The funds also help contribute to cover costs of railroad displays, maintenance, and acquisition of equipment as needed.

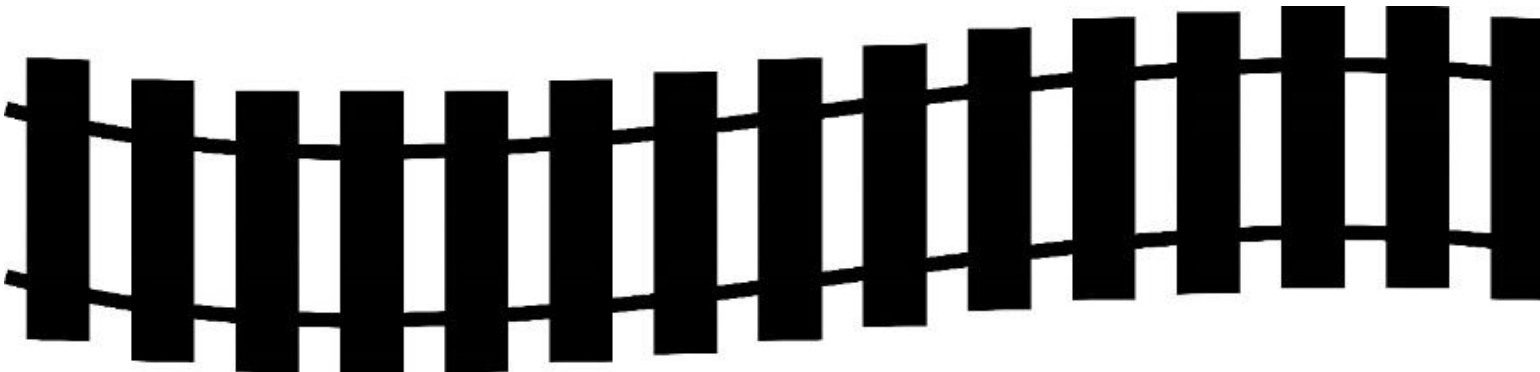
Dues need to be paid by March 31st. We encourage everyone to mail them at this time and not wait for a show to pay Jeff or Turk.

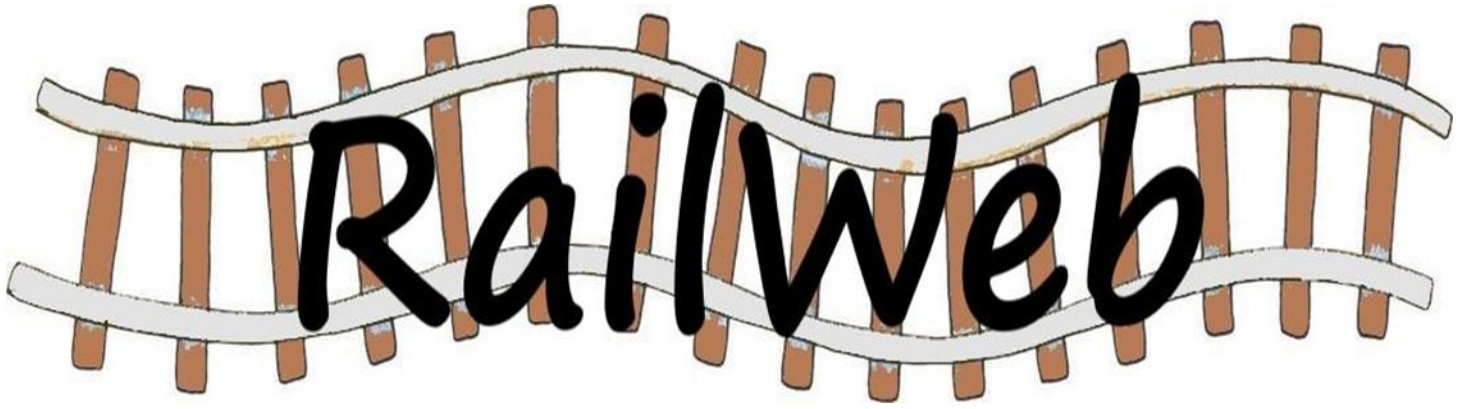
Please mail your check to:

Jeff Shubert

258 Chestnut Drive

Shippensburg Pa 17257





Videos and Websites

This column is dedicated to sharing some interesting items that a previous member (Bob Wenger) had found on the Internet and thought he would share with club members. He provided us with many of them before leaving so we can continue this section of the newsletter for an extended period of time. Please send me any interesting videos and websites you have found so that we can continue sharing them in future newsletters. Enjoy! Dee

The Basics for Scale Modeling

Part 1 - https://www.youtube.com/watch?v=3cFRdAgi4pU&list=PL_9IBeL-iBL3UoWZeOcLZbVosjbCvVXUiH

Part 2 - https://www.youtube.com/watch?v=tvOaioXyV0g&list=PL_9IBeL-iBL3UoWZeOcLZbVosjbCvVXUiH&index=2

Part 3 - https://www.youtube.com/watch?v=Q0ZLKfPz0J8&list=PL_9IBeL-iBL3UoWZeOcLZbVosjbCvVXUiH&index=3

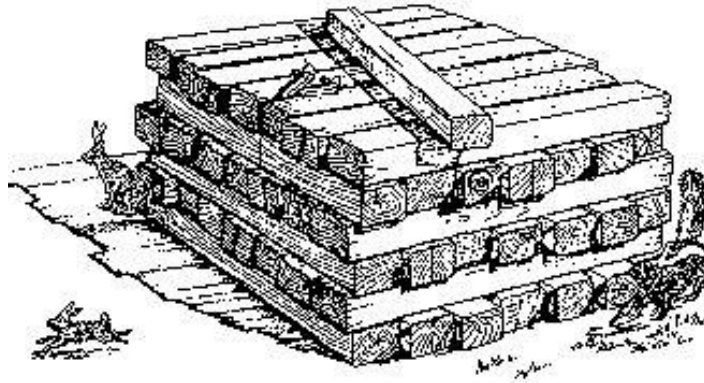
Part 4 - https://www.youtube.com/watch?v=7w7aCaiLwmw&list=PL_9IBeL-iBL3UoWZeOcLZbVosjbCvVXUiH&index=4

Part 5 - https://www.youtube.com/watch?v=P6R8mr9Z3IE&list=PL_9IBeL-iBL3UoWZeOcLZbVosjbCvVXUiH&index=5

Part 6 - https://www.youtube.com/watch?v=bBP291DI2WU&list=PL_9IBeL-iBL3UoWZeOcLZbVosjbCvVXUiH&index=6

2024 Layout Tours – Volunteers Needed

If you have a garden Railroad layout, we would appreciate it if you would consider having an open house in 2024. This is a way for members to get ideas and provides good comradery among our members. If interested contact Robert Kluk at jokatson@msn.com to set up a date. Sunday afternoons seem to work best for most members.



SVGRS Club Officers

President -

Vice President - Robert Kluk (440) 364-8385 jokatson@msn.com

SVGRS Secretary - Rob Segessenman (717) 359-8515 rob@robtronics.com

Treasurer – Jeff Shubert (717) 530-0561 shube@comcast.net

Newsletter Editor – Dee Simmons (717) 424-0610 dustydeemk@yahoo.com