



SVGRS Newsletter May 2021

2021 Calendar of Events

Mar-31	Deadline to pay 2021 Dues
June 20	Open House Randy Mower 5218 Eton Place, Mechanicsburg. 2PM till 4PM
Sep-18	1:00am - General Meeting #3/Club Picnic, Southampton Township Park, Southampton Junction Pavilion, 200 Airport road, Shippensburg, PA
Sept TBA	2:00pm Trailer Inventory, Clean inventory items and repack for RR
Oct-15	Deadline for 4th quarter News Letter Articles
Nov-TBA	9:00am - Rocky Ridge Pre-Setup up ; Track & Platforms
Nov-TBA	9:00am - Rocky Ridge Complete Setup
Nov-TBA	5:00pm - Christmas Magic Opening Day
Dec-TBA	4:30pm - General Meeting #4/Christmas Party (Hanover Railside Dinner)
Dec-31	2019 Rocky Ridge Christmas Magic Ends

Cut out and paste on your refrigerator

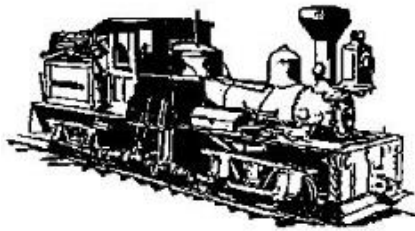
Note: The above dates are subject to change depending on local and Government restrictions due to Virus

Reminder

SVGRS DUES: Dues are \$25.00 per year. Your membership funds support the costs of insurance, website, picnics and storage for our equipment. The funds also help contribute to cover costs of railroad displays, maintenance and acquisition of equipment as needed.

Dues need to be paid by March 31st. We encourage everyone to mail them in this time.

Please mail your check to
Jeff Shubert
258 Chestnut Drive
Shippensburg Pa 17257



2021 Layout Tours – Volunteers Needed

If you have a garden Railroad layout we would appreciate if you would consider having a open house in 2021. This is a good way for members to get ideas and also provides good comradery among our members. If interested contact Robert Wenger, weng308@yahoo.com to set up a date. Sunday afternoons seem to work best for most members.

OPEN HOUSE

Randy Mower is having an open house June 20 from 2PM till 4pm. He has invited the SVGRS members. His address is 5218 Eton Place, Mechanicsburg, PA. His cell number is 717-319-5612.



2021 East Coast Large Scale train show

Despite Issues with Covid 19 and other factors, the show was still held on April 30 –May 1st at a small shopping center at 1564 Whitehall Road Annapolis MD. With only 2 weeks' notice, 90% of the Garden clubs and vendors did not attend. It is a shame they could not wait and have it later in the year. A vacant building across from Star Hobby was used and had small rooms around the perimeter and one big open space area that would have been too small for our club to set up a nice display anyway.

There were 7 vendors and 2 small layouts for buyers to view. The Potomac, Washington Virginia Large scale club had a floor layout. The other club from Baltimore area had a 5x8 circus layout with an incline train.

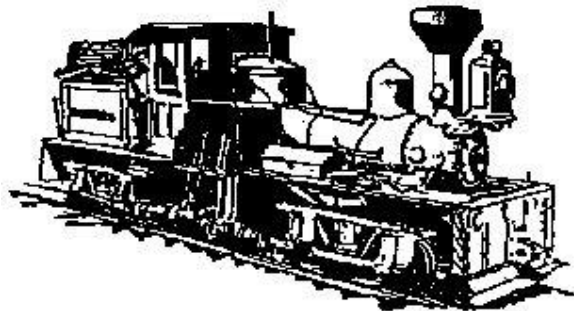
Vendors included Mike Switzer from the Tampa area, Seaside Hobbies and 5 smaller resellers. No manufacturers showed up.

Star Hobby had their store open so Rail fans could check out the store and get other train items. It is a big store that mostly sells G scale trains.

I was there around 10am (Friday) and there were a fair number of attendees with purchases, but way smaller than the normal show.

Star Hobby is planning to have the show again in 2022.

Submitted by: Barry McNew & Turk



Members visit the Gulf coast

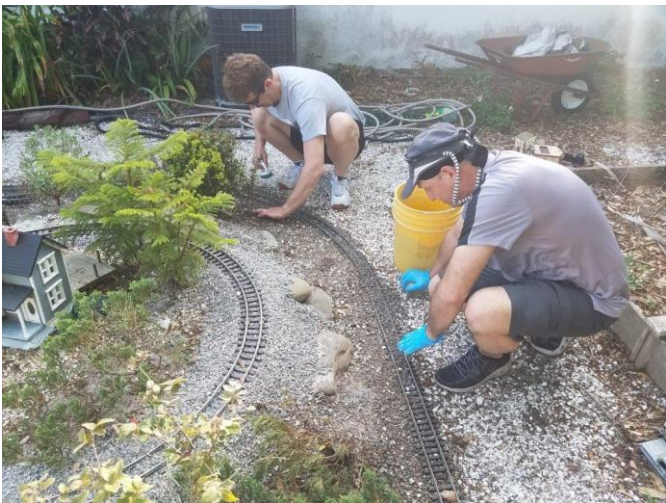
A few of us members sometimes go the extra mile to help out fellow railroaders. In this case, Turk and Rob traveled over 1,000 miles to the Gulf coast of Florida to visit some friends and vacation. The trip included helping out a fellow garden railroader who needed a few hours labor to put his layout back in operating condition after over a year of punishing Florida sun and rains that had made it in-operable.

Turk has been friends with Capt. Jack Hill for a good many year, so a vacation with trains and boats is a good fit. Turk and Rob had the opportunity, while in Florida, to help Jack with some serious track work and layout repairs. We all have our strengths and weaknesses. Jack is an avid modeler with a fantastic eye and level of artistry with painting. He loves to build intricate buildings and scenes and recently has gotten into some 3D printing to create new features. Jack isn't as confident with track work and electrical, so we braved the Florida Sun (88 degrees by 10:30) to put his layout back in operation. This involved leveling track, and re-ballasting 75 % of the layout. We also fixed dead spots and track joints, including adding replacement tie strips and reconnecting a section where a switch was “stolen” for a new sawmill feature. Jack's layout has an elevated loop surrounded by a complex figure eight folded on top of itself to create an interesting set of features.

Mother nature presents different challenges in Florida than she does in PA, but maintenance is still a necessity. Rain and wind can wipe out a layout pretty quickly. Jack then takes care of Turk with some dinner cruises and always a cool new deck boat to take out for the day. In the evening, we fix locomotives that have been waiting on parts. (Stocked in Turks suitcase) It all works out for friends that have common interests.

Take a look at some of the pictures below to check it out!



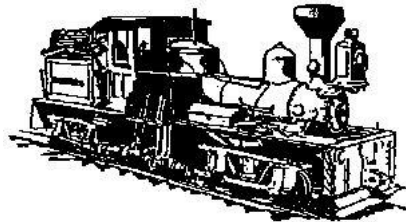


Florida Railroad Musuem

A few days later we traveled to the Gulf coast RR museum to see what's new at their two locations. Long time Garden Railroader, Stan Kotas, now president of the living Museum and Turk have been friends since Don Sweet introduced them over 15 years ago. Stan offers a private tour with a wealth of information about their trains and the Florida area. They have combined the G scale club and real trains all under one association. In addition to train rides on most weekends they have a full-sized, large scale layout in a baggage car. It is a learning and interpretive setup for all folks to see G scale trains run and how to build a display.

Check out these pictures as well!





How do you store and transport trains?

Submitted by Rob Segessenman Jr.

I think every one of us has purchased a diesel or steam engine that comes from the factory packed in Styrofoam and cardboard designed to protect from the perils of UPS or FedEx or even worse, the USPS. Of course after you add detail items such as railings or smoke stacks, they no longer fit as well, if at all. Especially for the engines or cars you might use frequently, the manufacturer's packaging does not hold up well to repeated use.

We have certainly seen this with club cars and engines. Therefore any of you that have been around during setup or tear down may have noticed we don't use the factory boxes for engines and even a few special cars, like sound cars or cabooses. We have also taken to using plastic tubs, and that is ok for cars. With a little care you can pack quite a number in a dense space. For engines, especially given the relative weight, we have taken to building custom wood boxes that match length and width perfectly.

The trick, with wood boxes, is to build them to be strong, but not add excessive weight. Thin plywood is key. If you look at the pictures, you will see 3/4-inch ends, and thin sides. The base is 1/2 with flange ways cut in to help hold the engines laterally.

I was lucky enough to have had my Dad build me a couple of engine boxes, and recently I spent some time to paint one to match the engines they are designed to hold. You can see from the pics that a pair of USA Trains GP38-2s are secured with foam. A close look shows the denser foam along the sides and between the units. This box gives me a great way to transport the units safely, and it's stackable. Could be just from the basement to the yard or all the way to a show or another layout. I would be happy to share this design with anyone. How do you transport your trains safely?



My layout changes for 2021

Submitted by Joe Mower

My son Randy Mower now has a 3D printer and has been printing a lot of Garden Railroad items including the Egg Gondolas and Egg Caboose he printed me for Father's Day. He also printed the Produce sign and Vegetable crates.

Randy is taking orders for these items and Crane Kits that he has been printing. If you are interested in purchasing any of these items, you can send him a private message on Facebook for prices and availability.

I rebuilt the highways on my layout this spring to give a better view of the buildings.

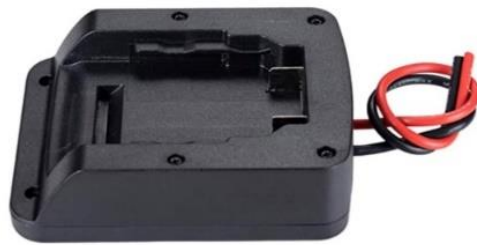


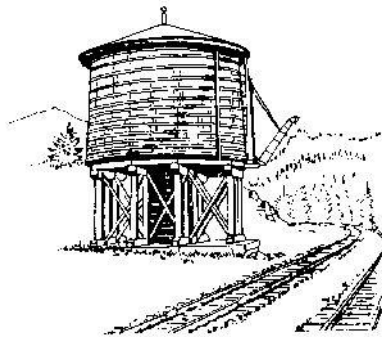
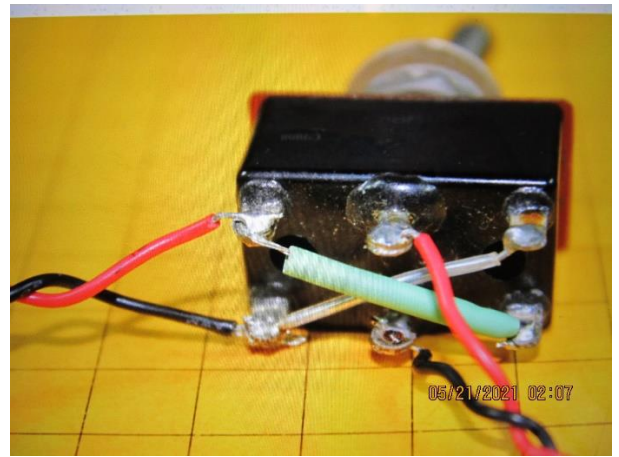
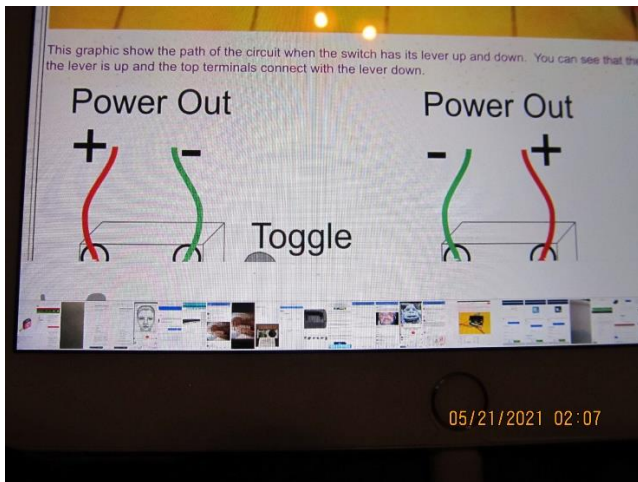


20 Volt Power Supply

Submitted by Joe Mower

I found this in the Amazon online store. It clips onto a 20-volt DeWalt tool battery and provides a 20-volt DC power supply. Cost \$15. I installed it in a toolbox to power my RC train engine. I also installed a switch wired as shown in the photo to control the LGB turnout. The switch is a double pole double throw momentary contact using the power from the Dewalt 20-volt battery.





Industry News: By Turk Russell

I received some information from Bob Wenger that Split Jaw, manufacturers of our favorite rail clamp has been purchased and will go back into production within the next few months. The original company was located in Oregon. We are informed that the new company will be located in Georgia.

Garden Railroad News publication is up and running.

Now that we no longer have a dedicated magazine for Large scale Railroading. Here is a viable replacement in the form of a mini Magazine similar to Garden Railways . Its all-volunteer from the California area. I encourage everyone to check it out.

Here is the link for the all-new GR News <https://www.grnews.org/>

SVGRS Club Officers

President – – Turk Russell (717) 762-8873. turkruss@gmail.com

Vice President Robert Wenger. weng308@yahoo.com

SVGRS Secretary - Rob Segessenman. 717-359-8515, rob@robtronics.com

Treasurer – Jeff Shubert (717) 530-0561 shube@comcast.net

Newsletter Editor – Joe Mower (717)-241-6483. jhmower@aol.com