



January 2009 – Newsletter

Visit our club website – www.SVGRS.com

Contents

Calendar of events

Club Officers

Advertisements

Separate Attachment, Updated membership list. Please check the list and notify me if your information is not correct.



Club Dues for 2009

2009 Club Dues should be paid by January 1, 2009. Dues are \$20.00 per family. You can send payment to Jeff Shubert, 258 Chestnut Drive, Shippensburg, PA 17257-9493



ROCKY RIDGE CHRISTMAS MAGIC

Tear Down will be January 10, 2009, Time 9:00 AM

Questions or workers call Turk 717-762-8873 or cell 717-977-1000
or call Walter Plank 717-486-3489

Hope to see you there!



March 2009 East Coast Large Scale Train Show (ECLSTS)

Jake Middour will chair with Marlyn Geesey as co-chair. Please mark your calendars with these important dates: March 26th (Thursday) set-up day.

March 27th (Friday) and 28th (Saturday) show days.

Tear-down of the display will follow the closing of the show on the 28th.

More details on the display will be made available as soon as the committee finalizes the plan.

Article submitted by

Jake & Marlyn



Christmas Party 2008

The SVGRS annual Christmas Party was held Saturday Dec 6 at the Brethren Home in Crosskeys Pa. Hosted by the Russells and the Planks; approximately 60 people attended the festive affair.

Many folks ran into delayed traffic due to the sudden snow and Ice storm, which caused terrible road conditions. Even though the weather was less than perfect, the festive spirit was not dampened. Many of our newer members attended and were warmly welcomed into the club. This is truly an opportunity for the established members to reach out to those just joining our club.

Badges were provided so all attending could become better acquainted. Each person received a ticket to be used for drawings later in the evening. 3 different drawings were offered and a multitude of prizes were offered. A buffet meal with fabulous portions was enjoyed by all attending.

Following the meal, various drawings resulted in almost all members receiving a door prize. Our auctioneer of the evening was Barry McNew. This year's item was a limited edition 2-4-2 steam engine with matching passenger cars provided by Turk Russell; which resulted in spirited bidding. Our winning bidder was Fred Wendling (\$130.00)

We would like to thank all members who donated prizes for the party; with a special "thank you" to Mel Pankuch for his great generosity. 50-50 tickets were sold which netted the largest jackpot ever \$154.00. Half went to the club; and the half other to our winner Fred Wendling, which incidentally was the high bidder of the auctioned train set. The irony here was; our treasurer (Jeff Shubert) gave Fred the money and then Fred had to give it back to pay his auction bill.

The group retired to the recreation room for a short pictorial called "Steam powered Logging" the video was provided by Marc Ruesser; and acquaintance of Turk. The group then returned to the dining room for dessert and a short business meeting.

Secretary and treasurer reports were given and approved. Nominations from the floor were accepted and additions were made to complete the list of candidates for January's ballot. It was agreed that a listing of candidates would be presented in the next newsletter. Official written ballots will be mailed to all current paid up members in January.

This social event was hugely successful due to the combined efforts of some hard working club members. With the combined efforts of planning and presentation, this annual event continues to improve each year. Come join us in planning for the event for next year. We are looking for some new members to step forward and take this event and help us out. Our goal is to say "Thanks" to those who faithfully serve and participate.

In an effort to be sure we miss no one in expressing our gratitude; we apologize, if we overlooked listing anyone who made a contribution to this event.

Submitted by: Walter & Turk

Christmas Party- 2009

Now is the time to begin thinking about next year's Christmas Party. **No!** It is **not too early** to begin preparations. As a club we have been fortunate to be able to arrange for a year end get-together where **ALL** could enjoy a party atmosphere and enjoy a festive meal. We need to support, **with more than words**, whoever takes on the formidable task of Christmas Party Chair-person. The **entire club** benefits from the efforts of this person and the supporting committee. A superb party will be the result if we all give them our support. Fortunately a new member has indicated willingness to accept the challenge and planning is now beginning.

Do not feel that your efforts would be insignificant or unwanted. If we **each** would contribute a small effort, the result would be a party of great proportions and greatly lighten the load on the party chair-person. This call to **all members**, is made in an effort to secure universal participation in club activities

The location of the party should consider fairness to all club members. Previously the location has been in the **Central/West**, perhaps we should consider an **Eastern** location. Final choice of location will be the chair's decision, but you as a member, should provide a list of potential locations.

Remember, adequate preparation assures success. We are looking forward to next year's party. Please email or call with your suggestions.

Walter E. Plank

Ps All suggestions will be shared with the new Chair-person.



Nominating Committee

Election Committee Recommendations

The election committee made contact with all SVGRS members to determine interest in serving in a leadership capacity. The ballot has now been completed and preparations are being made for mailing them to all current paid up members.

Club bi-laws indicate responsibility of members to participate in the bi-annual election of club officers. One (1) VOTE PER FAMILY will determine successful candidates for the office of President, Vice

President, Treasurer, Secretary. Written ballots completed by qualified voters will be forwarded to the election chairman. Completed ballots will be collected and stored until February 1, 2009. A combined meeting of the election committee will be held at which time the ballots will be reviewed, counted and the results will then be made available to the club membership.

This opportunity for you (the voter) to determine the leadership of the club is dependent upon membership participation. If you do not vote, others will determine your club direction. If you do not take the time to forward a completed ballot to the election committee, you have indicated you approve of the final tally for the candidates.

SVGRS is a club with a united interest in Garden Railroading. We must all fully participate in club activities and especially determining the leadership and direction of our club. Do your part-----Vote for candidate of your choice

Complete the ballot and return to election committee assuring that our club is directed by the principle of majority rule.

Submitted by Election Committee

Club Candidate Results		
Notes	First	Last
President	George	Myers
President	Walter	Plank
Secretary	Dave	Watts
Secretary	Roberts	McCrea,
Treasurer	Jeffrey	Shubert
Treasurer	Joe	Mower
Treasurer	Bill	Bowers
Vice President	Fred	Whitley
Vice president	Turk	Russell
Vice President	Rich	Reese,



SVGRS Meeting Minutes ----- 6 Nov 2008

President Tom McCloud called the meeting to order at 7PM
 Officers Present: Turk Russell, Jeff Shubert, and Dave Watts
 Membership present: 26

The club secretary did not read the minutes as they were previously put in the newsletter and the last minutes were from the 17th April 2008 meeting and considered too old to merit taking valuable time from new business.

Treasurer's Report: Jeff Shubert presented a financial report along with a copy of the ledger. Balances as of 31 Oct 08 was \$3325.40 in savings and \$3866.91 in checking for a total Balance of \$7192.31. He gave an overview of income and expenses for the last 8 months. Jeff also mentions that he is now accepting 2009 membership dues. Dues (\$20) are payable to Susquehanna Valley Garden Railway Society.

The club welcomed five new members to the club who were present for their first club meeting: Eric and Dianna Spooner, Randy Alleman, Denny Rothermel, and Myra

Old Business:

Club Picnic: Bob Segessenman gave an overview on the very successful club picnic that he and Harriet hosted at their home. The club gave them a large round of applause for hosting and for doing a wonderful job with the picnic.

York Fair: Dave Watts presented an overview that was pretty much the same as he previously stated in the club's newsletter. He again thanked everyone for their help in making the display a fun two weeks and hopes everyone enjoyed the display as much as he did and looks forward to chairing another display for the club.

East Broad Trip: Turk Russell gave an overview on the first annual club train trip/outing. He stated that that everyone had a good time and he looks forward to chairing another outing next year and is soliciting for ideas. Again there was an article in the last newsletter giving more details on this year's event.

New Business:

Rocky Ridge Display: Turk and Walter Plank are co-chairmen of the display. Set-up day will be 15 Nov starting at 9AM. The display starts on the 27th Nov through the 31st Dec. Please volunteer with set-up or with helping to watch the display. Walter will be contacting you for your help. The display will also incorporate switches which permits the train to run outside the building.

Christmas Party: Turk and Walter are co-chairmen for the party.

Cost: \$11 per person (club will pay a portion of the cost for dinner as a THANK YOU to the membership for their great support doing the past year). Walter stated he will contact each member to see if they will be attending and money should be sent to Jeff Shubert.

Thomas & Friends Train Set: Bill Bowers was able to locate and buy a hard to find set and offered to sell the set to the club at his cost. A motion was made by Dave Watts and second by Jake Middour to purchase the set for \$200. Motion was accepted by membership and voted on with 100% yea.

Trailer and club equipment storage: Tom McCloud asks Bob Segessenman if everything went well and if he was satisfied with this year's agreement and would he continue with storage again next year. Bob stated he had no problems and he would continue to storage trailer and items for the club.

Equipment Purchases: Club discussed purchasing 5' lengths of track and #10 switches. The club will purchase the items after the first of the year. Club hopes it can get a better price on the items as these items won't be needed until early March.

Harrisburg Garden Show Display: Turk will chair the display again this year. The show will be held in early March. Turk will provide information as more details become available.

East Coast Large Scale Show: Will be held 27th and 28th March. Club is looking for someone to chair. Please contact Tom McCloud if you would like to chair. It also has been noted that the sponsors are going to have a show in late Oct 09 at York as they have cancelled two of their other shows.

Nomination Committee: Walter reported that the committee has numerous names for each officer except for the club secretary officer. Nominations will be taken from the floor at the Christmas party. A ballot will be prepared by the committee and mailed to each member and then be returned to the committee for tallying the results. The committee will announce the results no later than March.

Future of the club: Walter raised the question to the membership "What do you want the club to be in the future" He ask all to think this out and give your ideas to him at the Christmas party. It was then suggested a questionnaire be prepared to prepare a handed out at the Christmas party. Walter accepted the suggestion and he will prepare and he'll hand them out at the party.

Conewago Valley Model Railroad Club of New Oxford, PA. Auction: Jim Dysart reminded everyone of the upcoming Model Railroad Item Railroadiana auction being held on the 26th of Nov at the New Oxford Fire Hall starting at 7PM.

SVGRS Club thanks Jim for being a great host as usual.

The meeting adjourned at 8PM

David Watts

SVGRS Secretary



Breaking News – Walthers to Distribute LGB Products!

Walthers is pleased to announce they have been appointed by Marklin, Inc., to be the North American distributor of LGB ("Lehmann Gross Bahn") products.

Walthers will be responsible for the sales, warehousing and distribution of Marklin's LGB product line for the entire U.S., Canada and Mexico.

Walthers will also provide warranty and retail service for LGB products, and will stock a full assortment of LGB parts. Marklin will provide marketing and product/technical support to Walthers and the North American market.

For more information on LGB's 2008 products, visit www.lgb-bahn.de to download the 2008 LGB new items brochure. LGB's new items for 2009 will be announced in February at the Nurnberg Toy Fair in Germany.

Complete details about LGB product inventory at Walthers will be available in early 2009 and will be posted on walthers.com at the earliest opportunity.

Thank you! Don Sweet



Several fortuitous work days greatly expand "The Littlestown Loop RR!"

After failing to expand the original 2007 right of way, good weather and outstanding support from our Northern "Parent" organization, "The Locust Hill RR," sub-roadbed and trackage more than doubled over the course of four days this past November. (Thanks Dad!) The Littlestown Loop RR did a lot of research into the various construction methods and we finally settled on using composite decking as the sub roadbed with Llagas Creek code 250 Nickel Silver flex track and switches. I plan to be able to support electric operations for the main right-of-way with battery everywhere else. The original trackage is essentially at grade level and 100% composite materials were used. The fall of my property is extensive enough to necessitate this raised area to avoid many tons of fill. Hopefully 2009 will prove as productive as 2008 turned out to be, and this can become a potential location/railroad to share with the club.

The management - "The Littlestown Loop RR" (Rob Segessenman Jr.)



A right-of-way is laid down on sub-roadbed. This "raised" area will have a station and yard modeled after Chama NM.



D&GRW K-28 #473, pulling a work train, makes it's maiden voyage down the first stage of the new right-of way.



This shows the expanded (my wife is going to kill me) yard area and the most eastern point of the new right of way.

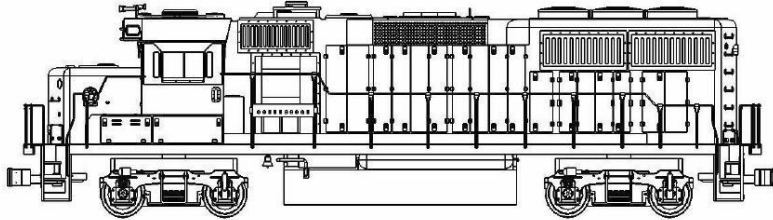


Twenty-four post holes and counting. Thanks to a lot of help, we're now 40ft from a complete loop!

LATEST NEWS IN THE INDUSTRY

Here are 2 new Loco products sheets from Accucraft, sent in by Don Sweet.

EMD GP60 DIESEL, ELECTRIC



(R) AML

American Mainline is now offering EMD GP60 in 1:29 scale and 45mm gauge in electric. This model is constructed by brass and stainless steel chassis with removable plastic body, and features individually powered die-cast trucks with ball bearing metal wheels, operating directional lighting and marker lights, lighted number boards, interior cab details with lighting, clear plastic windows, brass castings, and knuckle coupler. Each model incorporates plug and play modular PC boards and electronics, smoke unit, built in speaker, and is DCC/RC & Sound ready with authentic looking details such as see through steps, cooling fan, windshield wipers, and more.

USRA 0-6-0 SWITCHER



SPECIFICATIONS

Scale: 1:29 Scale, 45mm Gauge
Min. Radius: 30 in. (0.75 M)
Length: 28.5 in. (724 mm)
Width: 3.85 in. (98 mm)
Height: 5.85 in. (148 mm)

ELECTRIC

0-24 DC Motor
Brass, Steel and die-cast metals
Full cab interior details,
Steel driving rods,
Steel driver wheels

MSRP: \$1,599.00
Estimated Delivery: Winter 2008

LIVE STEAM

Butane Powered
Brass, steel and die-cast metals
Two cylinders with piston valve
Water level glass, Pressure gauge,
Check valve, Steel driving rods,
Steel driver wheels,
Optional water hand pump

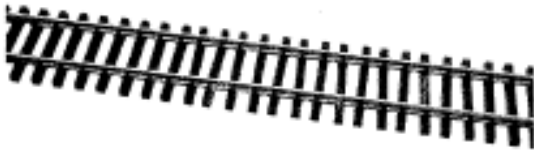
MSRP: \$1,699.00
Available Now

2008 End of Year Special

Free shipping on order \$1,500 and over. A shipping charge will apply to free goods.



AMERICAN MAINLINE
33266 CENTRAL AVE
UNION CITY, CA 94587, USA
TEL: (888) 961-8724 FAX: (510) 324-3366



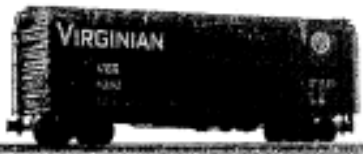
Club

BUY 4 CASES OF USA TRACK, GET ONE CASE FREE

QTY	SKU	ITEM	MSRP	DLR NET
	G201-01	CODE 332 BRASS FLEX TRACK 6' USA (12PCS/BOX)	\$495.00	\$288.00

BUY 4 CASES OF EURO NG TRACK, GET ONE CASE FREE

QTY	SKU	ITEM	MSRP	DLR NET
	G202-01	CODE 332 BRASS FLEX TRACK 6' EURO NG (12PCS/BOX)	\$495.00	\$288.00



(ARISTOCRAFT
5' BRASS = \$346.00)

Club

1:29 BOX CAR, 4 CAR SET

QTY	SKU	ITEM	MSRP	DLR NET	
	G401-04	8' 6P SUPERIOR DOOR - BM 4 CAR SET (#76035, #76082, #76119, #76154)	\$476.00	\$263.88	59.00
	G401-11	8' YOUNGSTOWN DOOR - VIRGINIAN 4 CAR SET (#63137, #63142, #63162, #63175)	\$476.00	\$263.88	59.00
	G401-12	8' YOUNGSTOWN DOOR - FRISCO 4 CAR SET (#17402, #17439, #17465, #17489)	\$476.00	\$263.88	59.00
	G401-13	8' YOUNGSTOWN DOOR - NW BLACK 4 CAR SET (#42723, #42745, #42778, #42797)	\$476.00	\$263.88	59.00
	G401-14	8' YOUNGSTOWN DOOR - D&H 4 CAR SET (#20016, #20025, #20047, #20076)	\$476.00	\$263.88	59.00
	G401-15	8' YOUNGSTOWN DOOR - NW RED 4 CAR SET (#42810, #42815, #42823, #42833)	\$476.00	\$263.88	59.00

RULES AND REGULATIONS PERTAINING TO 2008 END OF YEAR SPECIAL:

American Mainline reserves the right to cancel this offer at any time without any notice. Special applies to in stock items only while supplies last, ends 12/31/2008. This one time promotional offer does not apply to any other products and previous purchases, nor can be combined with any other specials. We reserve the right to change prices, colors, specifications and availability without notice.

SVGRS Club Officers

President - Tom McCloud (717) 762- 9508 fernetta64@embarqmail.com

Vice President - Turk Russell (717) 762-8873 1turk@embarqmail.com

SVGRS Secretary - Dave Watts (717)-264-8187 suern@innernet.net

Coordinator of Layout Tours. Kirk Slenker - (717) 244-3522 or slenke@aaicorp.com

Treasurer – Jeff Shubert (717) 530-0561 shube@comcast.net

Secretary/Membership – Dave Watts (717)264-8187

Newsletter Editor – Joe Mower (717)241-6483

Related Garden Railroad Businesses

Russell's Customizers – Repairs to garden railroad equipment. (Aristocraft, Bachmann & LGB. Moderate pricing for Garden Railroad equipment, technical advice, rail mechanics & maintenance problems. Call evenings 717-762-8873 Turk & Renee Russell.

RCS of New England – Specializing in battery control throttles for G scale trains. They also provide sound systems and special lighting effects. 717-259-9523 Don & Donna Sweet

Appalachian Gardens- Specializing in miniature plants and trees for Garden Railroads. They also offer a full range of nursery products. Appalachian Gardens provides plant materials for club exhibits and displays. 717-597-8456 Tom & Fern McCloud Website,

www.smallplants4bigtrains.com

Victoria's Timeless Treasures & Dale's Garden Railroad Depot – Provides a full range of Garden Railroad equipment, accessories and supplies. They invite members to view their extensive multi-track layout. 610-589-9000 Dale & Victoria Bricker

Cool Train Hobbies – General train supplies and merchandise specializing in G scale trains. 717-898-7119 Ted & Kim Symonds.

Martins Greenhouse

It is a small greenhouse business specializing in perennials. This includes rock garden plants & miniature conifers, which fit in well with garden railways.

Noah & Marian Martin

5489 Division Hwy.

Narvon, Pa 17555

717-354-7546

martinsghse@juno.com

Railroadguy.com

Local company of

Custom steel bridges

Visit www.railroadguy.com

717-629-5545

